



Version 4

Installation manual

for

Windows



*An easy-to-use Finite-Element-Analysis Program for
Windows-, Linux and MacOS computers (64-bit only)*

*This Freeware Version is the literary property of the
Chair for Engineering Design and CAD, University of
Bayreuth, Germany,
composed and edited by
Professor Dr.-Ing. Frank Rieg*

In collaboration with:

*Dr.-Ing. Bettina Alber-Laukant;
Dipl.-Ing. Daniel Billenstein; Maximilian Braun, M.Sc.;
Kevin Deese, M.Sc.; Christian Dinkel, M.Sc.;
Pascal Diwisch, M.Sc.; Dr.-Ing. Michael Frisch; Johannes Glamsch, M.Sc.;
Christian Glenk, M.Sc.; Dipl.-Ing. Daniel Goller;
Dipl.-Wirtsch.-Ing. Reinhard Hackenschmidt;
Stefan Hautsch, M.Sc.; Dipl.-Ing. Claudia Kleinschrodt;
Dr.-Ing. Dipl.-Math. Martin Neidnicht; Dr.-Ing. Florian Nützel;
Dr.-Ing. Bernd Roith; Frank Rudolph, M.Sc.;
Dr.-Ing. Alexander Troll; Dipl.-Ing. Felix Viebahn;
Dr.-Ing. Christoph Wehmann; Aljoscha Zahn, M.Sc.; Dr.-Ing. Jochen Zapf;
Dr.-Ing. Markus Zimmermann; Dr.-Ing. Martin Zimmermann*

All rights reserved by the editor

Version 4 April 2017



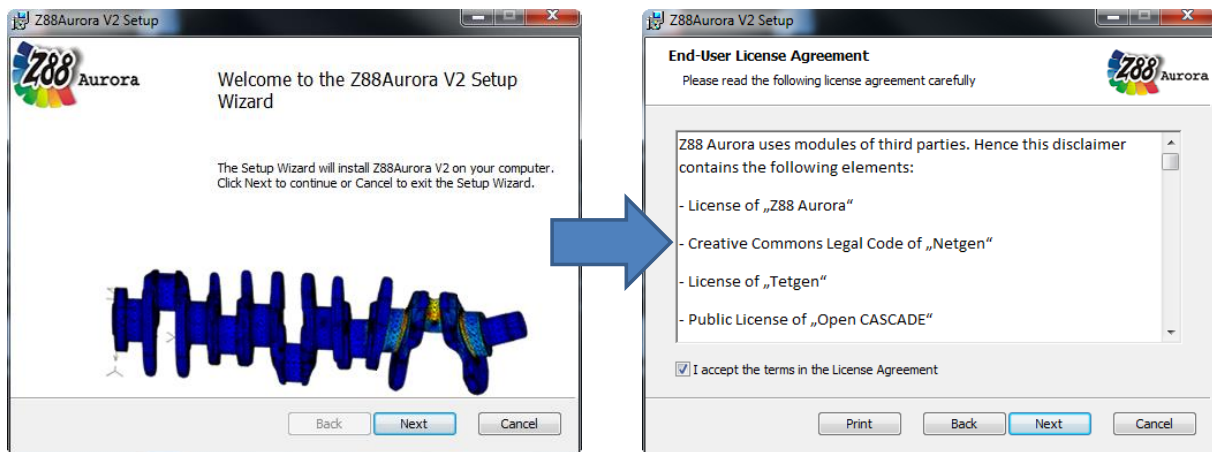
is a registered trademark (No. 30 2009 064 238) of Professor Dr.-Ing. Frank Rieg

INSTALLATION

The installation for Windows is managed by *Microsoft® Installer (MSI)*. The following version is available in Z88 Aurora V4:

64-bit Windows `z88aurorav4_64_en.msi`

The respective installation menu leads you through the installation (Figure 1). The standard installation directory is located on „C:\z88aurorav4“.



1. Proceed with installation

2. Read and accept License Agreement

Figure 1: Begin installation

You can adjust this setting by choosing the respective folder in the installation dialog box (Figure 2).

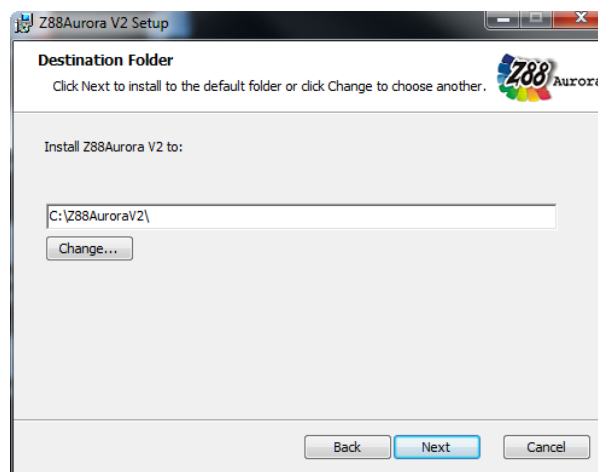
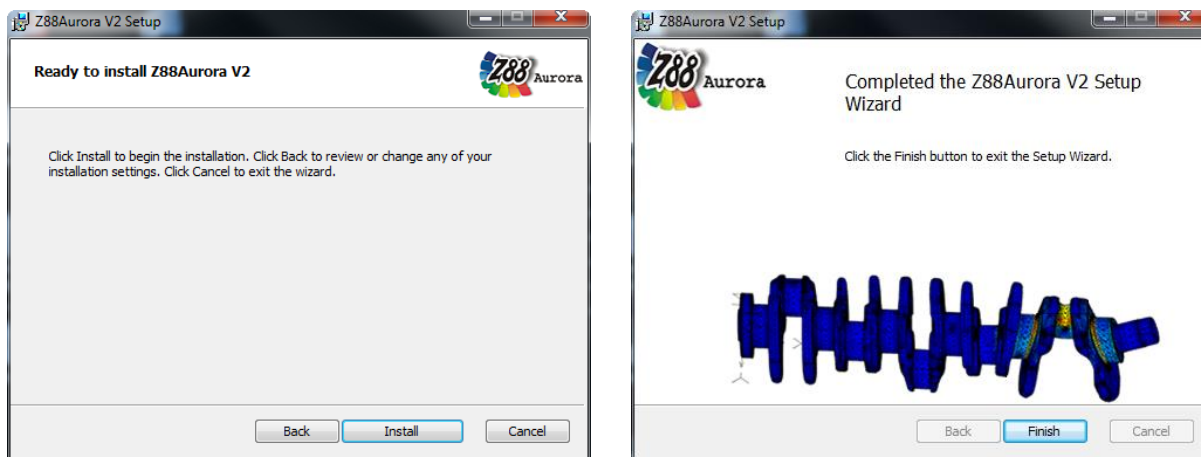


Figure 2: Begin installation

⚠ Please note, however, that the respective installation directory must not contain any space characters!


Finally choose "install" to complete the installation (Figure 3).



4. Install program

Figure 3: Finish installation

FIRST START OF Z88AURORA

To start the program either click the desktop icon  „Z88Aurora V4“ or open the program via Start → „Z88Aurora V4“ → „Z88Aurora V4“. If you have not installed the desktop and start menu entries, you can start the program directly via Windows Explorer:

„[chosen_installation_directory]\win\bin\z88aurora.exe“.

To adapt Z88Aurora more easily to your specifications, you are asked to enter the directories of the support modules and programs you want to use for Z88Aurora, when you start the program for the first time.

For this purpose, a dialog window opens, where you can enter the respective programs (Figure 4):

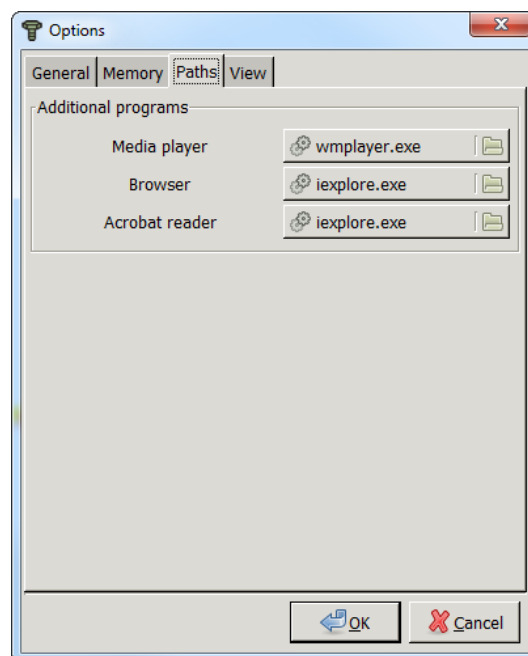


Figure 4: Customizing Z88Aurora

– **Media Player**

Selection of the media player by which the video tutorials will be accessed from Z88Aurora.

e.g. Media Player; standard path „c:\Program Files (x86)\Windows Media Player\wmplayer.exe“

– **Browser**

Selection of the browser by which the homepage and the user forum will be accessed from Z88 Aurora.

e.g. Internet Explorer; standard path „c:\Program Files (x86)\Internet Explorer\iexplore.exe“

– **PDF-Reader**

Selection of the PDF-Reader by which the Z88Aurora manuals can be accessed.

e.g. Adobe Acrobat Reader;

standard path „c:\Program Files (x86)\Adobe\Reader 9.0\Reader\AcroRd32.exe“